

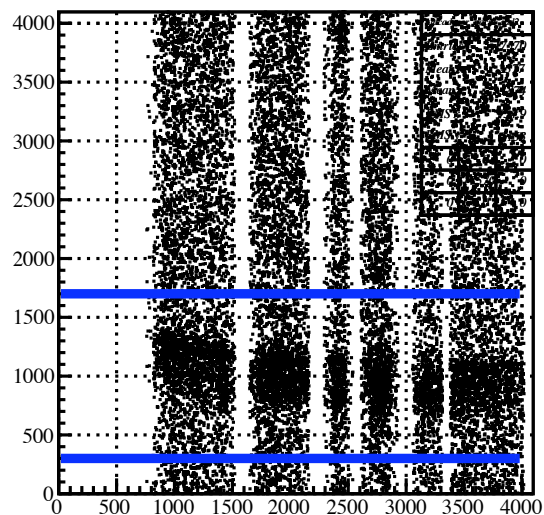
## TDC kaons timing cuts (SDD by SDD)

1st cycle E549 trigger events

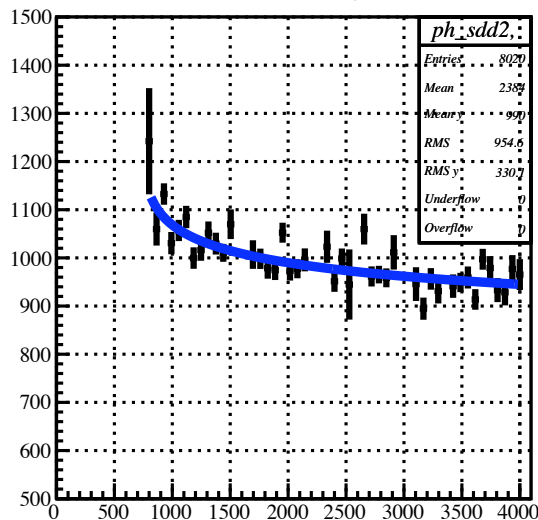
slewing fit function :  $a + b*x + c*\log(|x - d|)$

loosely cut :  $\pm 3\sigma$  from the mean of residues.

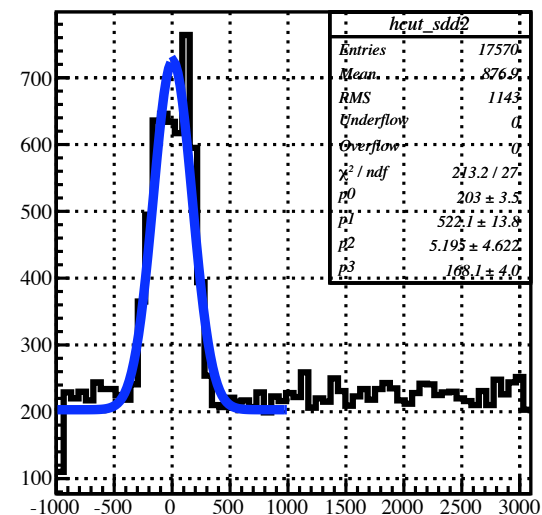
sddt1[1]:sadc0[1]



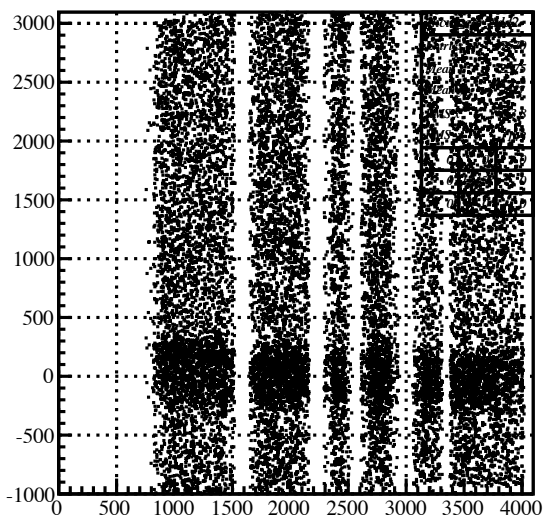
ProfileX fit,



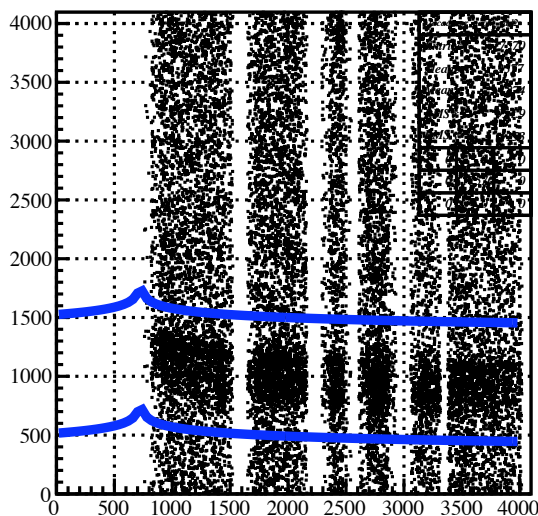
residuals sdd2



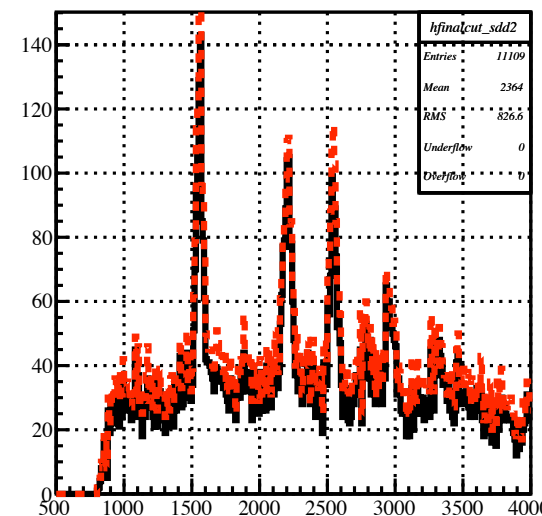
corrected correlation sdd2



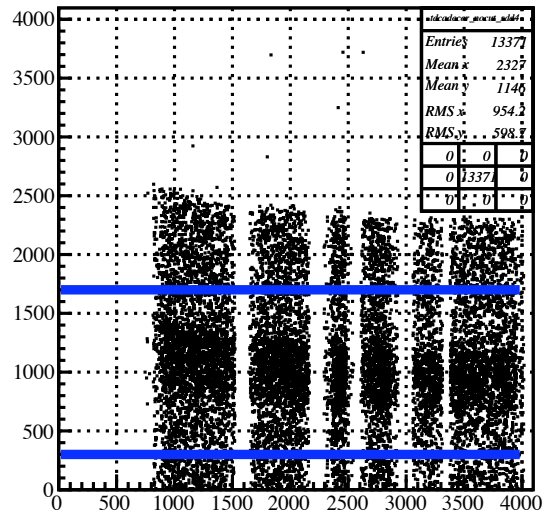
sddt1[1]:sadc0[1]



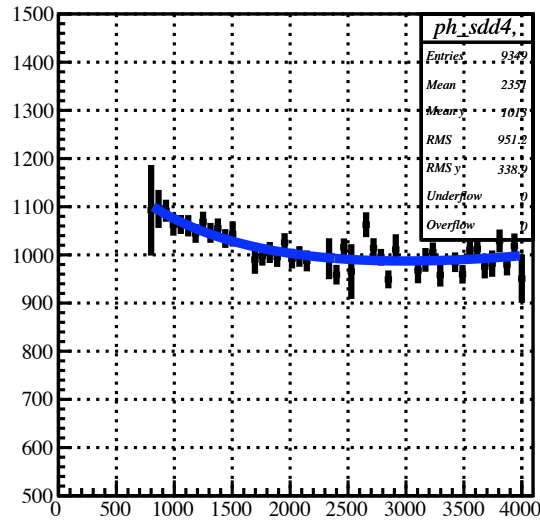
out id = 2 (after cut)



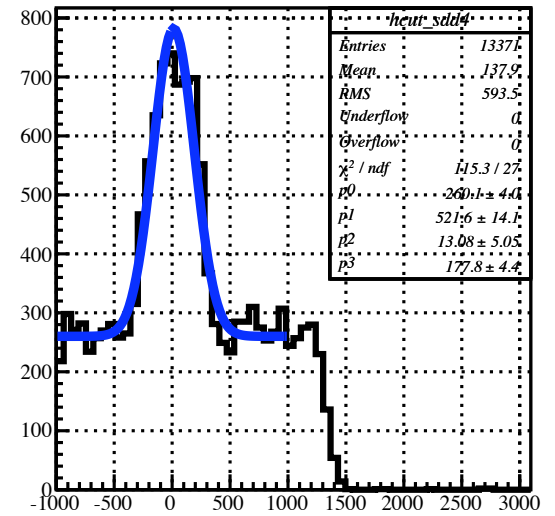
sddt1[3]:sadc0[3]



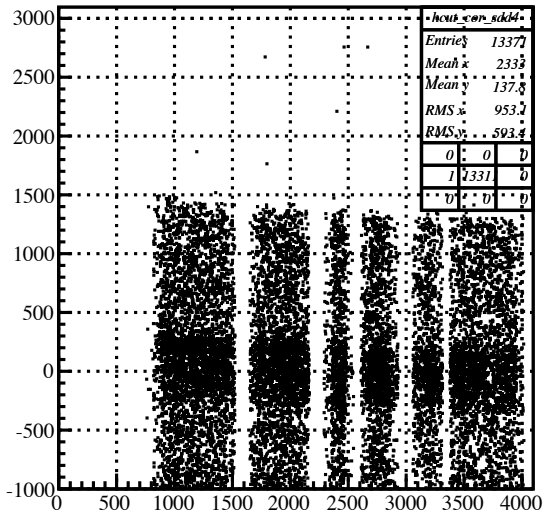
ProfileX fit,



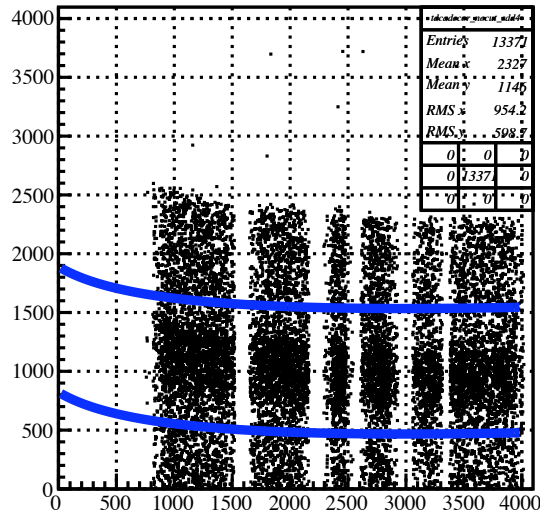
residuals sdd4



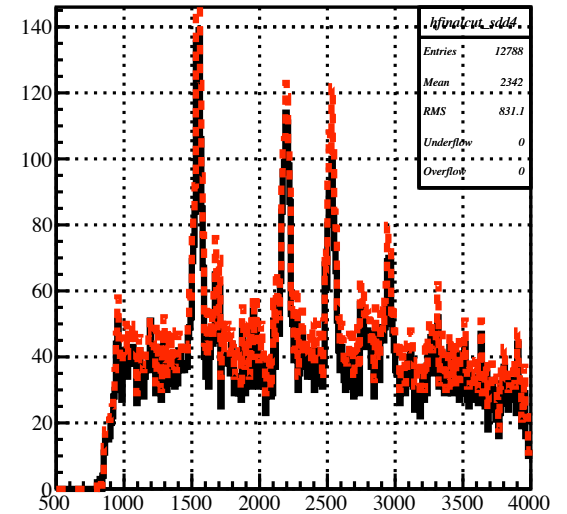
corrected correlation sdd4



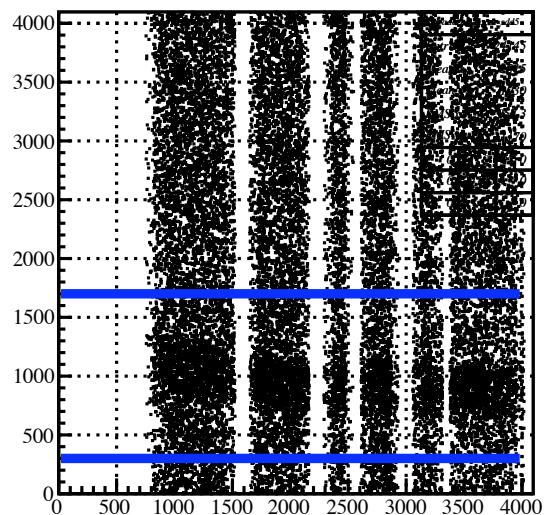
sddt1[3]:sadc0[3]



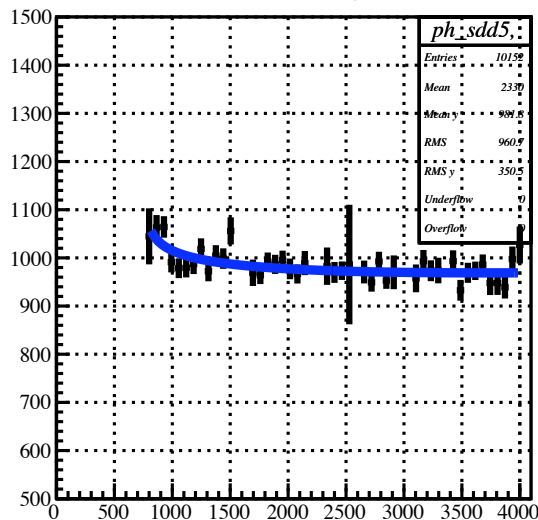
out id = 4 (after cut)



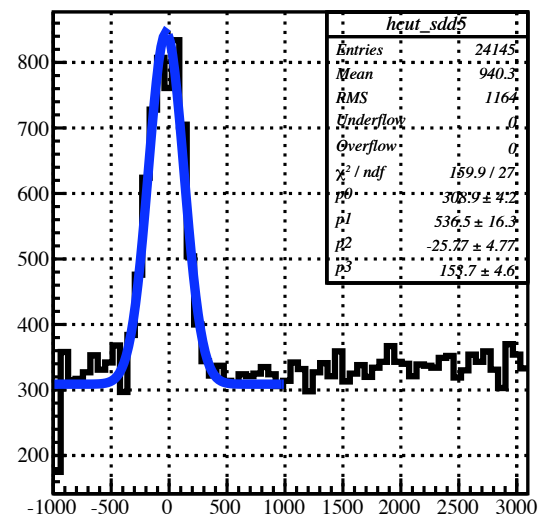
sddt1[4]:sadc0[4]



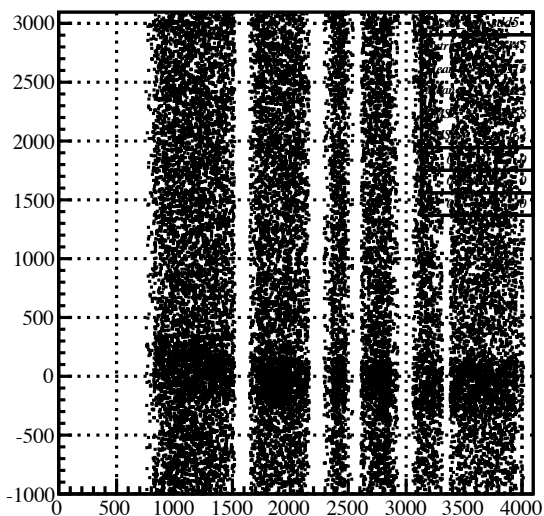
ProfileX fit,



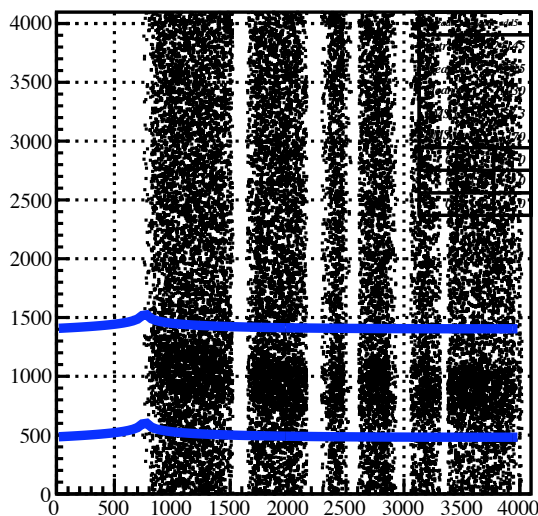
residuals sdd5



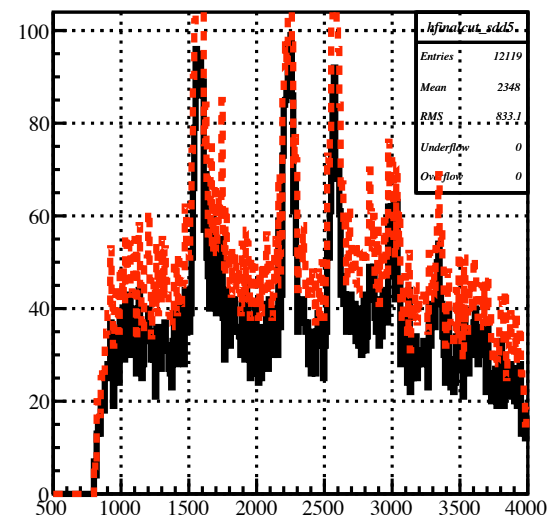
corrected correlation sdd5



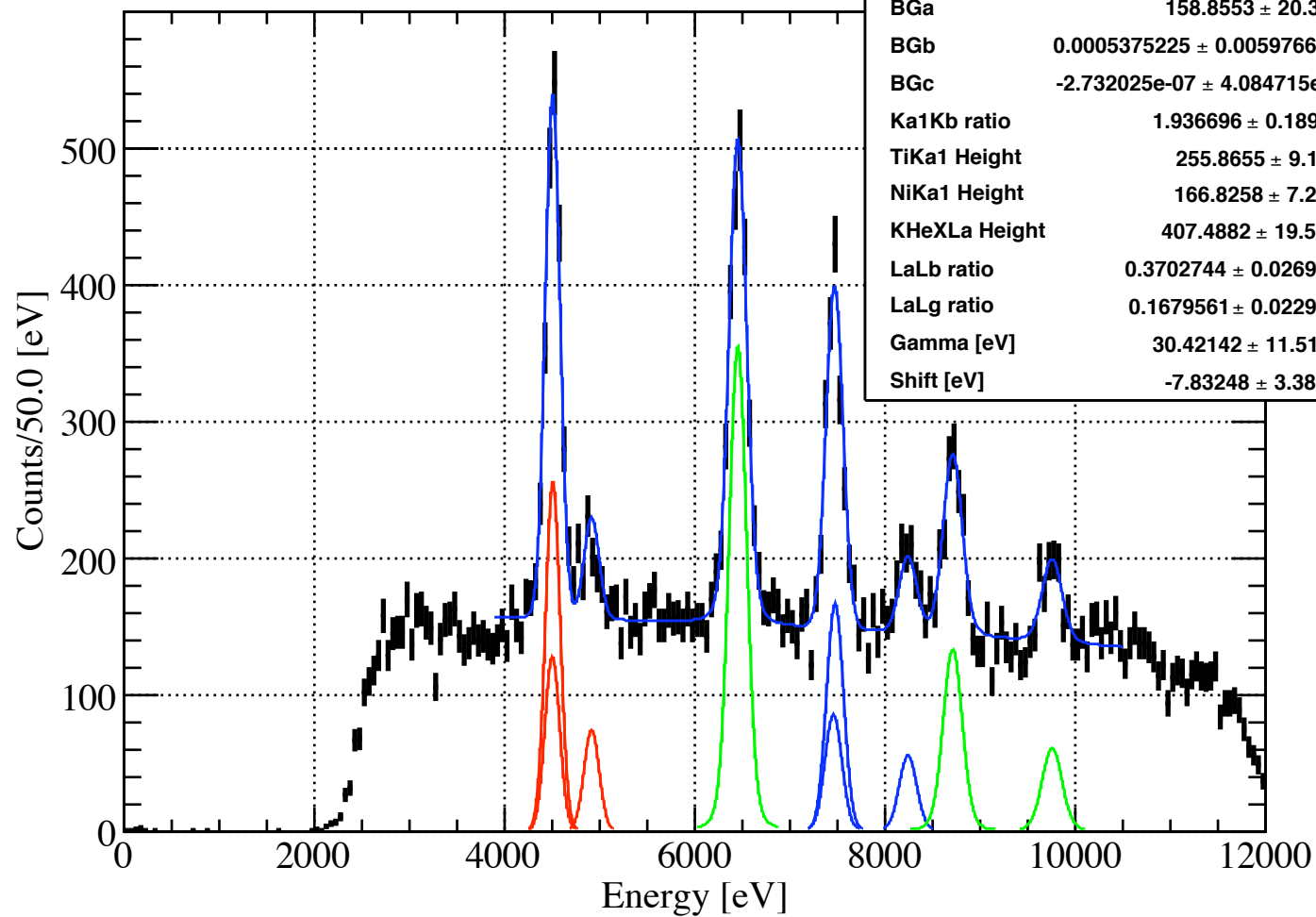
sddt1[4]:sadc0[4]



out id = 5 (after cut)



# 1st total kaon timing cut vc



$\chi^2 / \text{ndf}$	148.1747 / 121
Prob	0.04715876
BGa	158.8553 $\pm$ 20.3541
BGb	0.0005375225 $\pm$ 0.0059766946
BGc	-2.732025e-07 $\pm$ 4.084715e-07
Ka1Kb ratio	1.936696 $\pm$ 0.189341
TiKa1 Height	255.8655 $\pm$ 9.1731
NiKa1 Height	166.8258 $\pm$ 7.2456
KHeXLa Height	407.4882 $\pm$ 19.5683
LaLb ratio	0.3702744 $\pm$ 0.0269848
LaLg ratio	0.1679561 $\pm$ 0.0229655
Gamma [eV]	30.42142 $\pm$ 11.51179
Shift [eV]	-7.83248 $\pm$ 3.38167