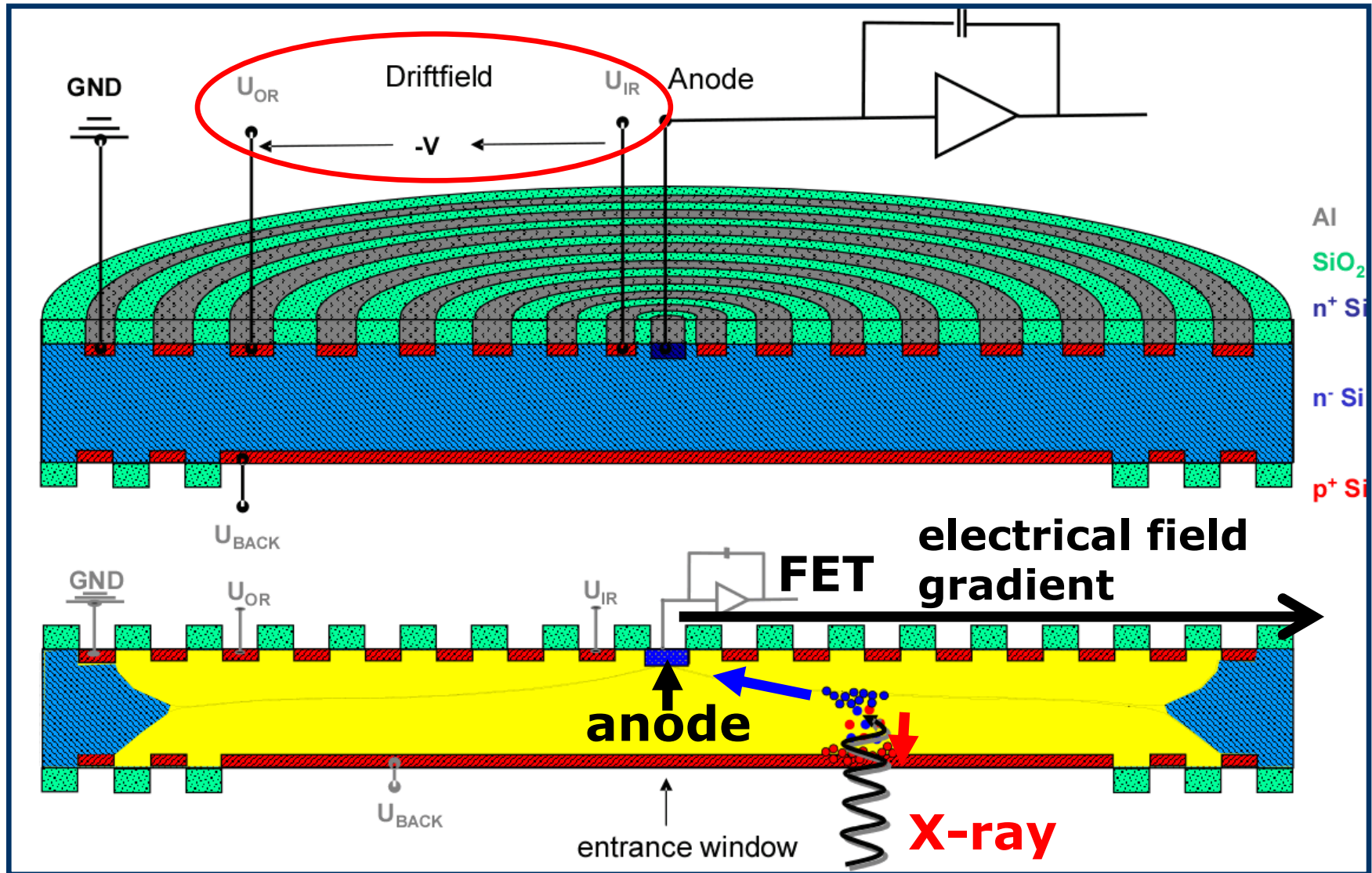


Why dose the lower side tail
have energy dependence ?

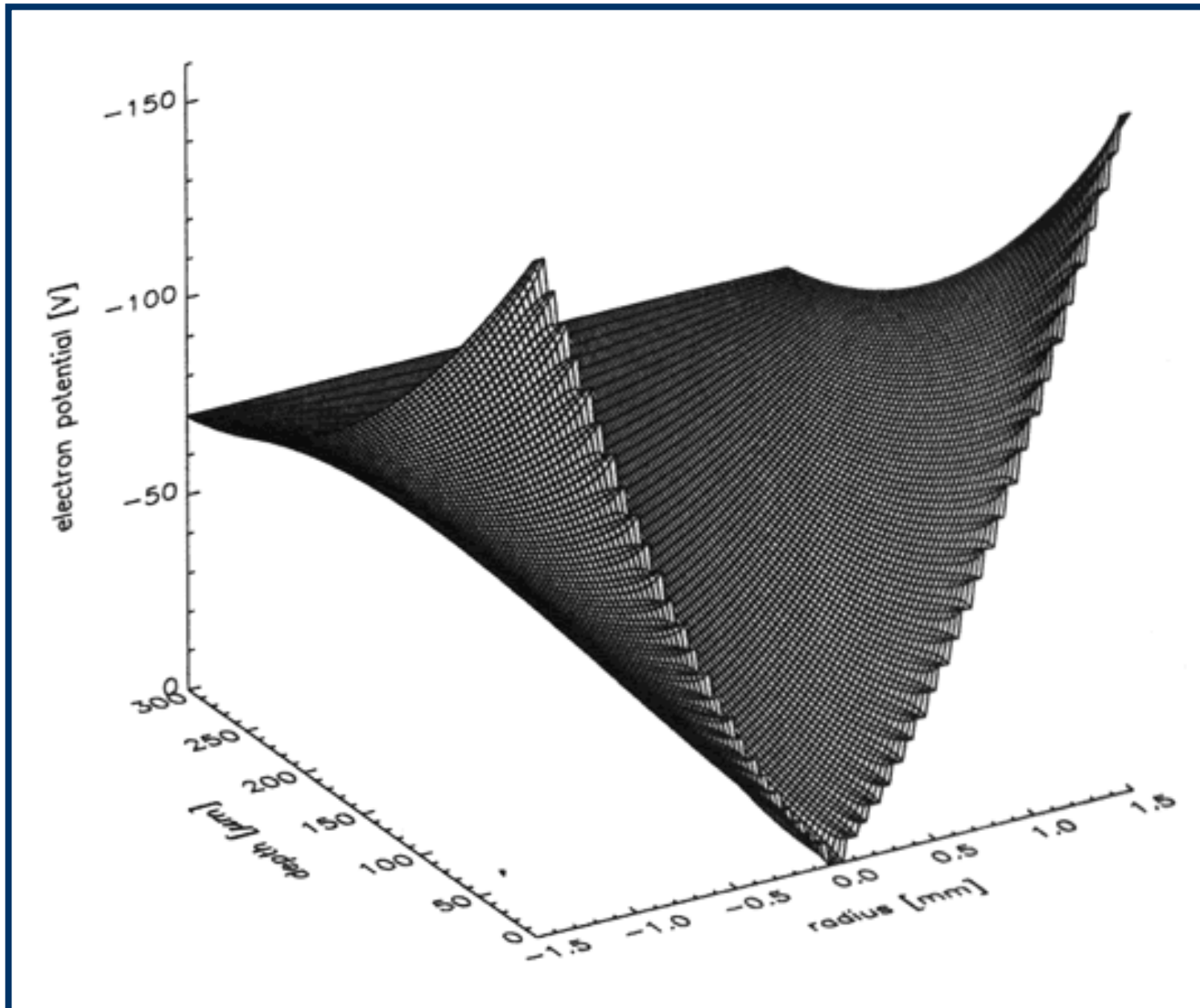
Charge recombination ?

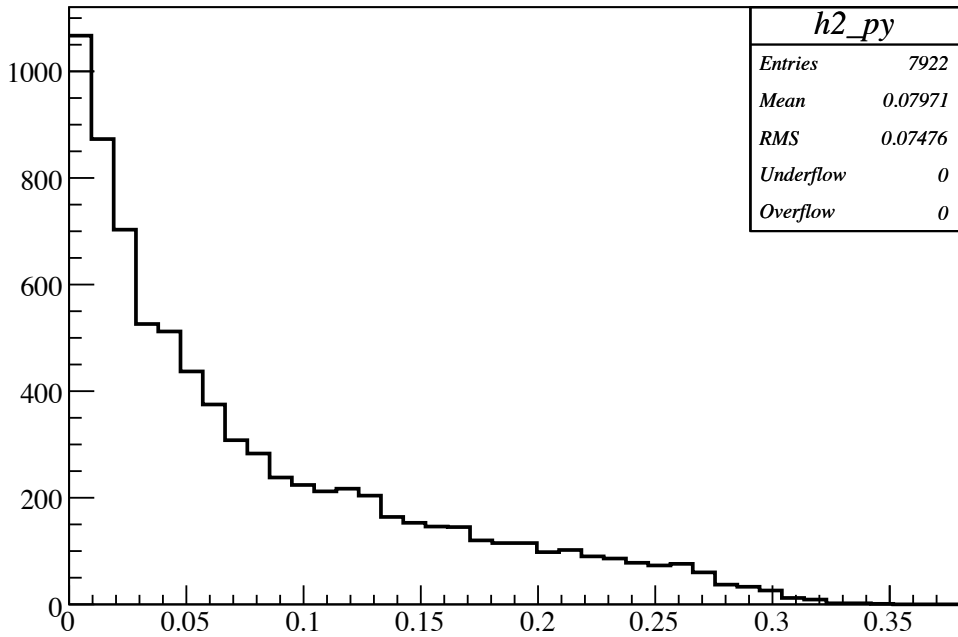
E570 Simulation (GEANT4)

Schematic drawing of a SDD



Simulated potential energy distribution in a SDD



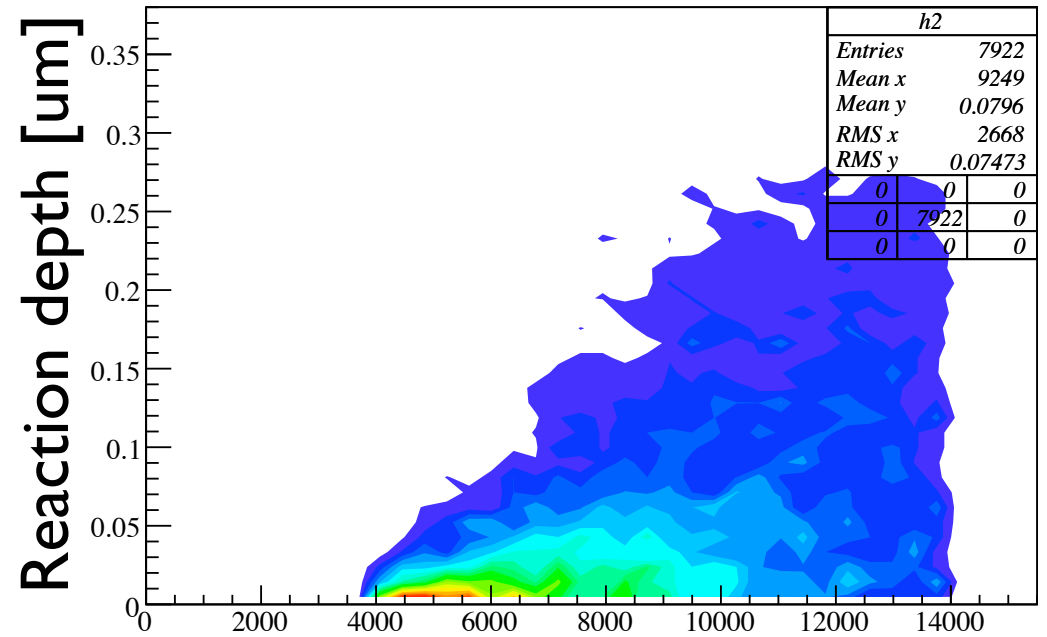


Reaction depth [mm]

X-ray Energy: Flat Dist.
4 - 14 keV

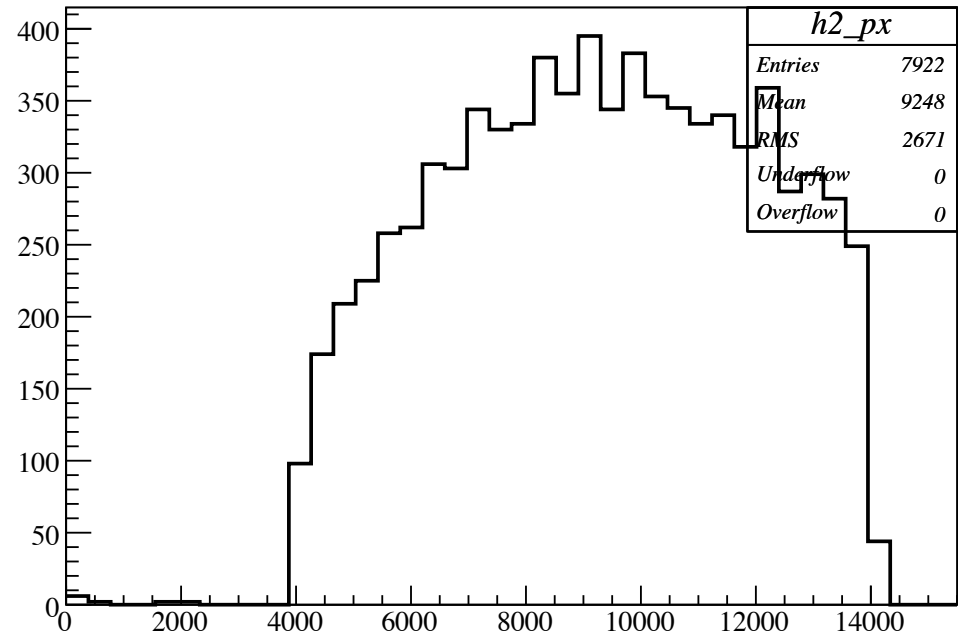
Generate Position: Uniform Dist.
inside the Target

SDD : 0.26 mm tilted 45 degrees



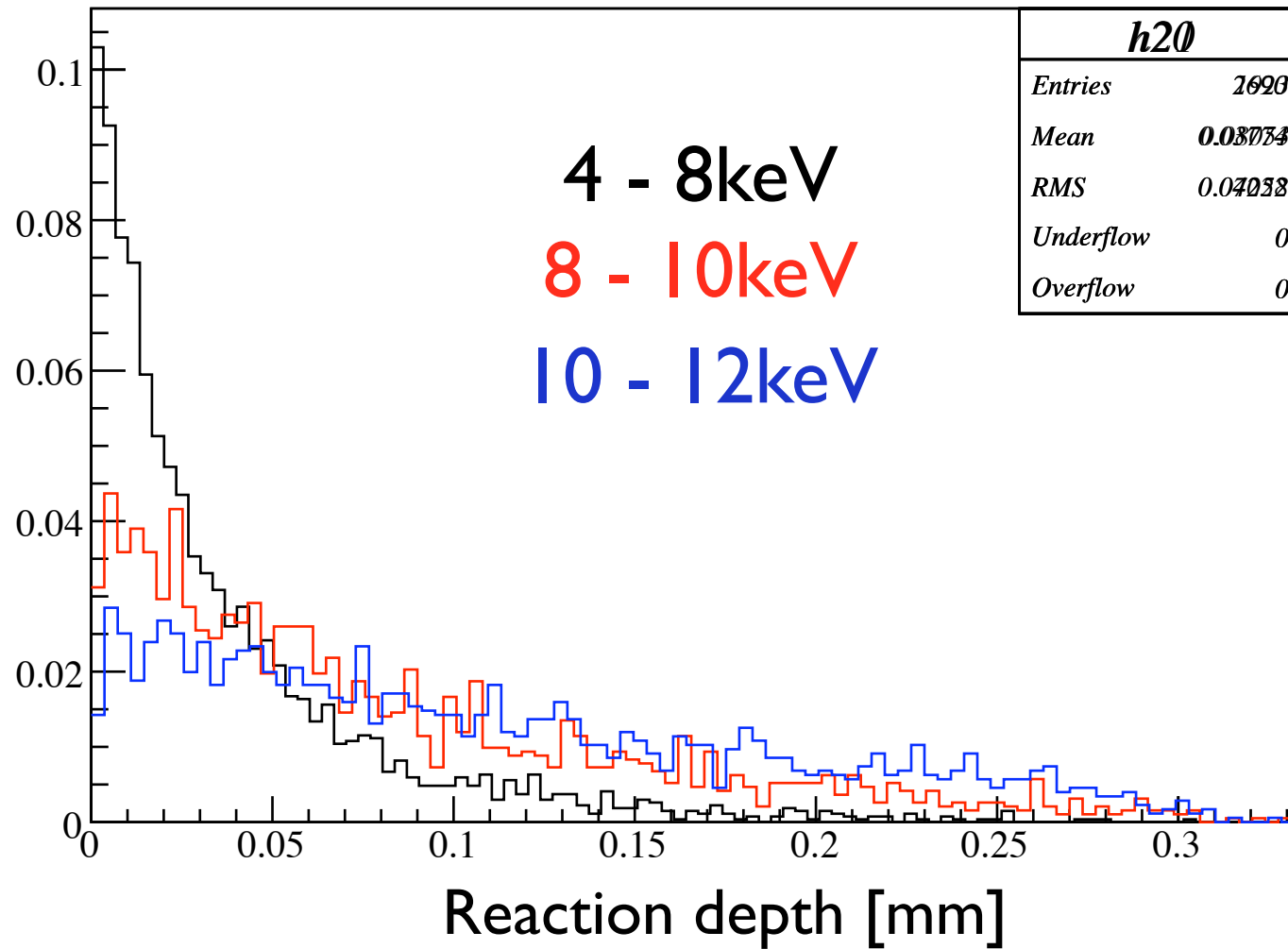
Reaction depth [um]

Energy [eV]



Energy [eV]

Energy region dependence (normalized) of reaction depth



Need charge recombination rate as a function of reaction depth to discuss the lower side tail...

But the the recombination rate may increase at near the p^+ , and it is also expected that the higher energy of x-ray is, the larger the recombination rate becomes.